



DeskPro 601 | 611 | 621 | 631



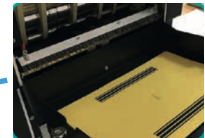
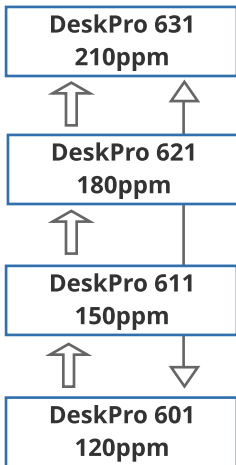
interScan's DeskPro series of high volume scanners are engineered and handcrafted in Germany, made exclusively for interScan by our partners at Inotec. The DeskPro 6x1 series of scanners offers all the features and benefits of a high volume scanner in a convenient desktop model.

Bringing the benefits of a high volume scanner to your desktop

Upgradeable Speed Onsite from 120ppm up to 210ppm allows you to easily grow with increasing volumes .

Speed Run can be set to reduce speeds down to 180ppm, 150ppm or 120ppm delicate documents.

Straight Through Paper Path through rear document output with active switch. Sorting by event control; patch code, counter, document length, barcode, etc at full speed.

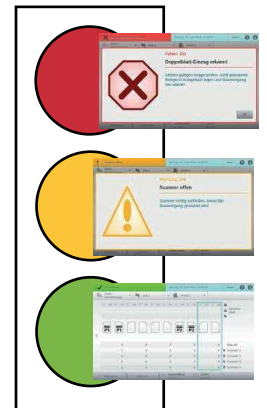
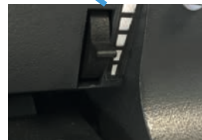


HD Imprinter brings top quality imprinting at maximum speeds, with resolution of 300, 600 or 1200dpi. Text size adjustable up to 4 lines and barcode printing.



7" MultiTouch Panel with red, yellow, green indicators with full text messages for easy, intuitive handling

Pressure Adjustment Input Paper to optimize the document feeding perfectly to most diverse documents.



Perfect Document TECHNOLOGY Complete Image Processing on board with gama correction, bicubic deskew, cropping and dynamic binarization for perfect bitonal images. In addition, PDT offers functions like multistreaming (simultaneous output of color, grayscale and bitonal images), automatic blankpage deletion, content based rotation, automatic or patch-code controlled color detection and much more.

interScan actively parts with leading software and technology companies to offer the best solutions to our customers. We are dedicated to our channel and only sell our professional production scanners through Authorized Resellers. To find a reseller or to become a partner please contact us today!

Output Hopper position options in four different angles

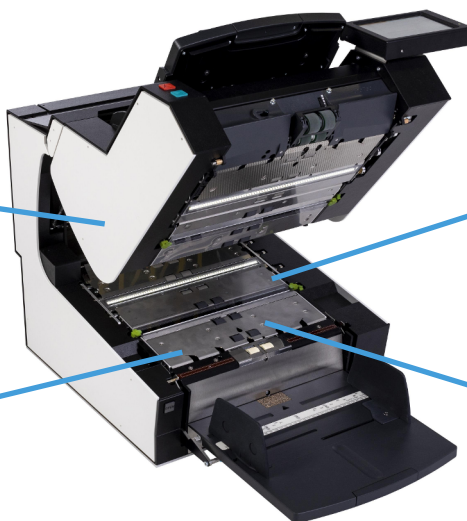


Maintenance Free Belt Transport

for safe processing of difficult and delicate documents that does not require cleaning or maintenance.



Paperclip Detection by metal detectors to protect documents



Superior Transport Path for easy cleaning and fast removal of paper jams.



No-Scratch Glass Guide scratch resistant to paperclips and staples with 3 year warranty.



Document Processing	
Duty Cycle	Unlimited 24/7, 65 million page endurance
Document Input	Auto feed from stack or single sheet feed (hand feed), integrated support for long documents (input hopper plate extension)
Paperstack	Up to 750 sheets, 12.5" W x 27" L
Paper Size/Weight	US sizes: ledger, legal, letter, executive, invoice – 0.067 lb to 0.62 lb
Feed Process Control	Mechanical sheet separation, double feed control, 5 ultrasound sensors (independently programmed)
Sorting	Real time sorting with camera internal papersize detection, patchcode and barcode reader
Scan Area	Tempered non-scratch glass with 36 month warranty, black or white background, programmable straight through paperpass, paper clip detection
Imprinter	Intelligent front- and backside Imprinter, front- and backside Batestamp, HD 1200dpi 4 Line Imprinter
Optics/Onboard Image Enhancement	
Camera Resolution	CCD linescan camera 600dpi optical resolution
Output Resolution	Full speed 75,100,150,200,240,300,400,600dpi dual or manual resolution possible
Output Compression	CCITT Group IV, JPEG, PDF/R or full speed uncompressed (RAW) Output
Illumination	Focusing white LED illumination unit
Bitonal/Binarisation	Intelligent dynamic threshold for optimized bitonal images
Grey/Color Image	8bit-256 grey levels, 24bit-16.8million colors (true colors)
Image Processing	Bicubic deskew, crop, black border removal, content based rotation, color dropout, CCP (color calibration), digital color filter

Interfaces		Technical Data	
Operation	Programmable Color Touchscreen, up to 2 footpedals, front scan start/stop	Power Consumption	115/240V Operating 80-160W, Energy Star 3 Certified
Drivers	ISIS (MS61) TWAIN, WIA, Linux avail	Environment	Temp 10-35C, relative humidity 30-80%
OS Support	Windows 7,8,8.1,10 ea 32 or 64 bit	Dimensions/Weight	24"W x 20.2"H x 33.9"D 143lbs
PC Connection	USB 3 High Speed Interface (Type A)	Noise Emission	Operating <63 dB (A), standby <48 dB(A)

interScan offers the most comprehensive and flexible service offerings on the market. By partnering with ServRight, we are able to provide access to over 3500 Field Service Technicians throughout the US and Canada.

